

PowerLite

HVR41-ST

La technologie **20 bar MAX Powerlite haute pression** au service du plaquiste
 Une vitesse de vissage inégalée = 0.06 s/cycle, un encombrement réduit et un poids minime =
 tels sont quelques-uns des avantages nombreux de cette cloueuse-visseuse haute pression.

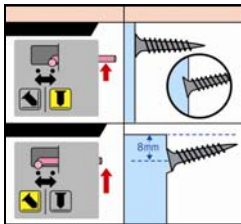
Caractéristiques techniques

Seulement
2,1 kg

Règlage de la
profondeur de vissage



Réglage instantané pour
vissage diagonal en angle.



Sélecteur métal - bois
= pour optimiser la
puissance de vissage.



Verrouillage
de gâchette

Crochet de
ceinture

Raccord d'air
pivotant 360°
exclusif pour plus
de liberté de
mouvement



Rapide



VIS COMPATIBLES

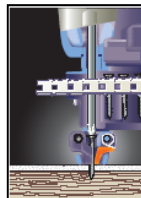
	1 couche	2 couches
Métal	PS3528M-BP	PS3541M-BP
Bois	PS3532W-BP	PS3540W-BP

* Vis MAX préconisées exclusivement

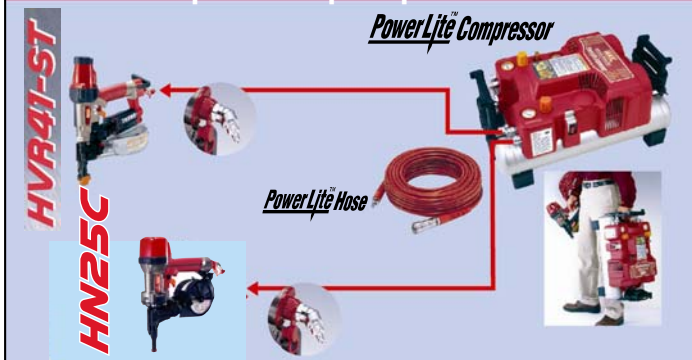
Rouleaux de 100 vis
reliées par plastique 0°



Livré en mallette plastique



La solution complète POWERLITE
pour le plaquiste !



Pour Les appareils HN25C et HVR41-ST Powerlite requièrent pour leur fonctionnement de l'air comprimé à haute pression délivré par le compresseur Powerlite AKHL1050E et acheminé par des tuyaux haute pression Powerlite.

Spécifications appareil

Modèle	HVR41-ST
Poids	2,1 kg
Dimensions mm	341(H) X 115(I) X 300(L)
Capacité de chargement	100 vis
Pression de service	18—24 bar
Consommation d'air	1.6 l / cycle à 18 bar
Bruit (EN12549: 1999)	LWA, 1s, d 95.75 dB LpA, 1s, d 87.76 dB
Vibrations (ISO8662-11)	1.84 m/s ²

MAX
SOFRAGRAF

SOFRAGRAF SENCO
 29, Rue de la Gare
 Saint Amé
 88125 Vagney Cedex
 France
 ☎ : +33 (0)3 29 26 26 00
 📠 : +33 (0)3 29 26 26 89
 contact@sofragraf.com
 www.sofragraf.fr

Rep	Article	Description
1	FS14306	CYLINDER CAP
2	FS13576	EXHAUST FILTER E
3	FS13455	EXHAUST COVER
4	AA21313	SCREW 3X20
5	FS13774	INSTRUCTION SEAL(TD341-ST(CE)
6	BB40210	SCREW M5X20
7	FS13443	CYLINDER CAP SEAL
8	FS13782	DIAL
9	KK23905	COMP. SPRING 3905
10	LL71802	STEEL BALL 3.5 60
11	FS13781	CHANGEOVER LEVER
12	FS13783	SPACER
13	FS13817	SPRING GUIDE
14	FS13557	STOPPER, VALVE
15	KK23819	COMP SPRING 3819
16	FS13816	WASHER
17	FS13550	CHANGEOVER VALVE
18	HH19911	O-RING 1.9X9.8
19	HH11114	O-RING AP4 N10094
20	FF31565	PIN 1565
21	FS14236	PISTON STOP HOLDER
22	HH19117	SPECIAL O-RING 1A 1.5X8
23	HH14151	O-RING AS568-029
24	FS13450	HEAD VALVE GUIDE A
25	KK23650	COMP SPRING 3650
26	FS13447	EXHAUST SEAL
27	HH11147	O-RING ARP568-119 N10013
28	FS13451	HEAD VALVE PISTON
29	HH19708	O-RING 1AP2.6X39.5
30	FS13452	HEAD VALVE GUIDE B
31	HH14159	O-RING AS568-127
32	FS13558	PISTON STOP CAP
33	FS13448	PISTON STOP
34	HH11111	O-RING 1AP 14 N5522(REPLACES TA15260)
35	FS13801	PISTON CAP
37	FS13802	MAIN PISTON
38	FF31539	STRAIGHT PIN 1539
39	FS13820	PISTON BAND
40	HH11131	O-RING AP11 *
41	FS13458	CYLINDER RING SEAL
42	FS13798	CYLINDER RING A
43	HH14028	O-RING AS568-028
44	FS13799	CYLINDER RING B
45	FS13454	CHECK VALVE
46	HH11143	O-RING AP21 851437
47	FS13797	CYLINDER
48	HH19170	O-RING A 1.5X18.2
49	FS13800	CYLINDER RING C
50	FS13808	CHECK VALVE B
51	FS13464	BUMPER
52	FS13559	BIT GUIDE
53	FS13561	BIT RING
54	EE39910	PLAIN WASHER 8.5X15X1
55	FS13441	FRAME
56	CN34309	PLASTIC SHEET LABEL (100421)
57	HA10776	LABEL A
58	FS13776	LABEL, TRIGGER LOCK

Rep	Article	Description
59	FF21254	PIN 3 X 28 N10038
60	KK23507	SPRING 3507
61	FS13569	TRIGGER LOCK DIAL
62	FF21201	PIN 2.5X10
63	FS13470	TRIGGER LOCK LEVER
64	HH11125	O-RING AP12 CN65086
65	CN31323	TRIGGER VALVE HOUSING
66	FF30161	PIN 161
67	HH11138	O-RING AP20
68	HH11119	O-RING AP6 N10027
69	HH11209	O-RING 1BP7 N10028
70	CN80431	PILOT VALVE ASSY
71	HH11113	O-RING AP9 N5528
72	KK24123	COMPRESSION SPRING 4123
73	HH11901	O-RING 1.4 X 2.5 CN65020
74	CN33723	TRIGGER VALVE STEM
75	CN31346	TRIGGER VALVE CAP
76	KK33247	SPRING 3247
77	TA16138	S.T. LEVER
78	KK33144	TORSION SPRING 3144
79	TA80189	TRIGGER ASSEMBLY
80	FF22402	SPRING PIN 3X16 (LIGHT LOAD)
81	FS13775	LABEL, CHANGEVER LEVER
82	FS13544	END CAP SEAL
83	FS13660	END CAP
84	BB40223	SCREW M5X16
85	HN10316	END PLUG CAP
86	TT05425	AIR PLUG H-FPM
87	CN35200	HOOK
88	FS13554	PIPE
89	FS13556	PIPE
90	FS13563	EXHAUST VALVE CAP
91	FS13803	EXHAUST VALVE HOUSING
92	HH19201	O-RING 1B 1.5 X 3.5 T29047(REPLACES TA15284)
93	HH11916	O-RING 1.9 X 3.8
94	FS13483	EXHAUST VALVE STEM
95	KK23747	COMPRESSION SPRING 3747
96	FS13578	STOP VALVE SEAL
97	FS13478	STOP VALVE HOUSING
98	HH11105	O-RING AP7 N5525
99	FS13481	STOP VALVE STEM
100	KK23749	COMPRESSION SPRING 3749
101	FS13480	STOP VALVE
102	KK23748	COMPRESSION SPRING 3748
103	FS13479	STOP VALVE CAP
104	HH12105	O-RING 1A 1.5 X 12.8 N5521
105	YY00009	CABLE TIE SKB-3M
106	KK23771	COMPRESSION SPRING 3771
107	FS13565	SHUTTER
108	FS13570	ADJUSTER COLLAR
109	CN33995	STOPPER
110	FS13484	ADJUST NUT
111	FS13486	ADJUST NUT
112	HH11903	O-RING 1A 1.2 X 4 T29051(REPLACES TA15277)
113	FS13485	CONTACT SCREW
114	KK23752	COMP SPRING 3752
115	LL71104	SPACER 2.5

Rep	Article	Description
116	FS13487	SWITCH
117	FS13445	EXHAUST FILTER B
118	FS13444	EXHAUST FILTER A
119	FS13489	STOP VALVE COVER
120	BB40415	BOLT 5X10
121	FS70056	GEAR ASSY
122	FS13501	GEAR GUIDE
123	FS70096	AIR MOTOR ASSY
124	FS13562	PIN
125	FS13542	PLATE, CONTACT
126	FS70048	GEAR C UNIT
127	FS81001	GEAR F UNIT (341A-ST)
128	FS81032	GEAR BOX B ASSY
129	AA21126	PAN-HEAD SCREW 4X14
130	FS13779	EXHAUST PACKING A
131	FS13780	EXHAUST PACKING B
132	FS13574	EXHAUST FILTER D
133	FS13517	EXHAUST FILTER C
134	FS13516	MOTOR BRACKET
135	BB40406	SCREW M5X12
136	FS80103	DOOR
137	FF41819	SETP PIN 1819
138	KK23754	COMPRESSION SPRING 3754
139	FS13529	CHECK PAWL
140	EE39602	WASHER 7
141	FS13527	CONTACT TIP
142	KK33290	TORSION SPRING 3290
143	FS13526	SCREW HOLDER
144	FF44401	STEP PIN 3290
145	FS14231	NOSE TOP
146	FF21217	W.S. PIN 3X8 T29028(REPLACES TA15547)
147	FF21233	SPRING PIN 3X18
148	FS13814	SPACER, NOSE TIP
149	FS13658	CONTACT ARM C
150	KK23750	COMPRESSION SPRING 3750
151	FS70005	CONTACT ARM B
152	KK23767	COMPRESSION SPRING 3767
153	EE33119	WASHER 4X8 (BLAC)
154	FS13631	CONTACT ARM A
155	EE31108	PLAIN WASHER 1-4
156	JJ10112	E-RING 3
157	FS13471	CONTACT ARM GUIDE
158	FS13519	NOSE
159	FS13521	FEED PAWL
160	KK23457	COM. SPRING 3457
161	FS13523	CONTACT STOPPER
162	FF41820	STEP PIN 1820
163	HH19125	O-RING A1.6X4.2 CN65064
164	FS13520	NOSE B
165	FS13522	FEED PISTON
166	HH11107	O-RING AP18
167	KK23899	COMP SPRING 3899
168	CN31953	FEED PISTON STOP
169	EE39907	WASHER 3.1X12X0.8
170	FS13778	FEED FLITER
171	CN35285	SPRING COLLER
172	JJ22408	C-RING 24

Rep	Article	Description
173	FS13524	CONTACT ARM COVER
174	AA21552	PAN HEAD SCREW 4X12
175	CC43401	NUT
177	FF22203	W.S. PIN 4X40(FORMER FF21222)
180	FS14501	CAUTION LABEL
181	FS14297	PROTECTOR
182	HN10379	GRIP COVER
184	FS14296	CYLINDER CAP PROTECTOR
185	BB40222	SCREW M5X30
186	FF21205	ROLL PIN 2.5X12 N5564
187	CN31069	STEM,RELIEF VALVE <<<<
188	KK23100	SPRING 3100 CN65022 (OBSOLETE)
189	CN35194	SPACER
190	TT05211	GREASE
191	EE39602	WASHER 7
192	FS13773	LABEL, OPERATION
201	FS70097	O RING KIT (HVR41-ST)
202	CN80150	SEQUENTIAL TRIGGER VALVE ASSY
203	FS70092	BODY ASSY (HRV41-ST)
204	FS81006	STOP VALVE ASSY
205	FS70055	GEAR BOX ASSY
206	FS70066	END CAP ASSY
207	FS70093	MAGAZINE SEAL ASSY
208	FS70094	MAGAZINE CAP ASSY
209	FS70060	CONTACT ARM ASSY